

# Simple to use, vandal resistant secure illumination.

## RVX CORNER MOUNT RV GUARDSMAN



2', 3' OR 4' RV GUARDSMAN  
MAXIMUM SECURITY CORNER FLUORESCENT  
1, 2 OR 3 LAMP T8

RV Guardsman provides lighting solutions for maximum, medium, and minimum security or high abuse areas. It includes fixtures for surface, recessed or corner wall mounting applications.

Project: \_\_\_\_\_  
Location: \_\_\_\_\_  
Catalog No: \_\_\_\_\_  
Fixture Type: \_\_\_\_\_  
Mfg: \_\_\_\_\_ Lamps: \_\_\_\_\_ Qty: \_\_\_\_\_  
Notes: \_\_\_\_\_

### Ordering Guide

Explanation of Catalog Number Example: RVX1CXDUS232120SO

Family	Luminaire Gauge	Luminaire Width	Mounting Style	Door Frame	Lens/Shielding	Lamp Qty in a Luminaire Cross Section	Lamp/Type	Voltage	Ballast Type	Options
<input type="text" value="RV"/>	<input type="text" value="X"/>	<input type="text" value="1"/>	<input type="text" value="C"/>	<input type="text" value="XD"/>	<input type="text"/>	<input type="text"/>	<input type="text"/>	<input type="text"/>	<input type="text"/>	<input type="text"/>
RV Series	<b>X</b> = Maximum Security 14 Gauge Housing	<b>1</b> = Nominal 12"	<b>C</b> = Corner	<b>XD</b> = Maximum Security 14 Gauge Double Door Frame with Piano Hinge	<b>US</b> = .250" Clear Polycarbonate with .125" Acrylic Overlay <b>CG</b> = Pattern 73 .140" Tempered Glass	<b>1</b> = 1 Lamp <b>2</b> = 2 Lamps <b>3</b> = 3 Lamps	<b>32</b> = T8 32W <b>25</b> = T8 25W <b>17</b> = T8 17W	<b>UNV</b> = 120/277V <b>120</b> = 120V <b>277</b> = 277V <b>347</b> = 347V	<b>SO</b> = Elect. T8, 1 or 2 Lamp I.S. <b>O3</b> = Elect. T8, 3 Lamp I.S. Consult Your Philips Lighting Representative for Other Ballast Options	Consult Your Philips Lighting Representative

# RVX CORNER MOUNT RV GUARDSMAN

## Features

- Ideal for high abuse areas such as detention cells and security corridors.
- 14 gauge post painted housing and double door frame.
- Door frame is secured by up to 4 TORX screws.
- Lens retained by one piece inner door frame.
- Door frame comes complete with piano hinge.
- Lenses available in prismatic acrylic, prismatic polycarbonate, and clear tempered glass.
- Overlapped and welded corners.

## Specifications

**Materials:** Chassis parts are 14 gauge cold rolled steel.

**Hinging:** 14 gauge cold rolled steel with all seams welded and ground smooth, and secured with up to 4 TORX screws with full length piano hinge.

**Shielding:** Secured by cold rolled steel continuous rails on all four sides.

**Finish:** Chassis exterior—white baked polyester enamel. Phosphate undercoating.

**Electrical:** Rapid start HPF, thermally protected class "P" ballast C.B.M. approved, certified by E.T.L. If K.O. is within 3" of ballast, use wire suitable for at least 90°.

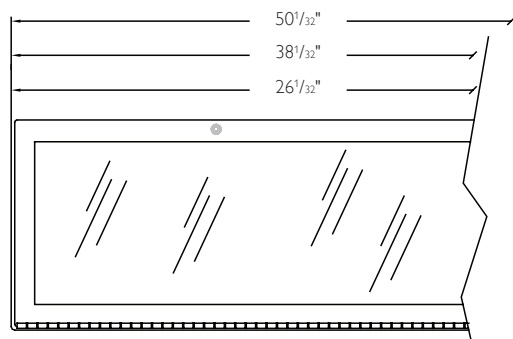
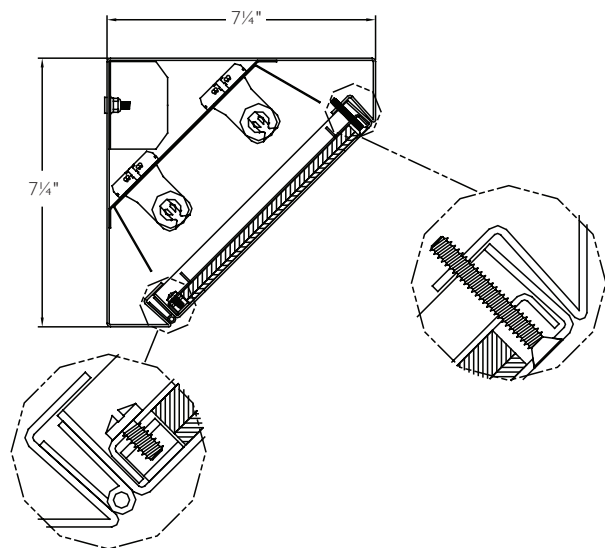
**Labels:** Listed by CSA.

This product may have a mercury containing lamp.  
Manage in accord with Disposal Laws.  
See: [www.lamprecycle.org](http://www.lamprecycle.org)

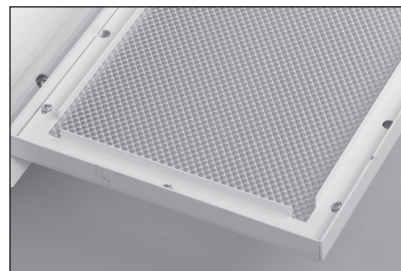
## Options/Accessories

**Tamperproof Tools:** Ordered separately.  
TORX Security Screw Driver: Catalog number **OP21864**.

## Dimensions



## Characteristics



14 gauge double door frame on maximum security models.

# RVX CORNER MOUNT RV GUARDSMAN

## Performance

### Model No. RVX1CXDUS232120SO

Report Number: LSC A912

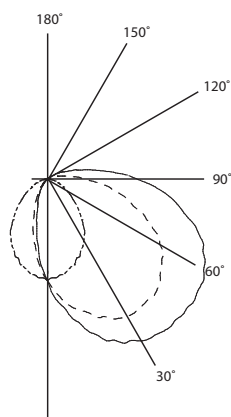
Catalog Number: RVX1CXDUS232120SO

Lamp: (2) F32T8/TL841

Ballast: Advance REL-2P32-SC

Report is based on 2950 lumens per lamp.

Efficiency: 41.7%



#### Candela Distribution

Angle	90	67.5	45.0	22.5	Beam	Output Lumens
0	627	627	627	627	627	
5	612	656	715	752	764	35
15	563	706	843	961	976	116
25	488	731	952	1090	1121	206
35	401	692	979	1141	1174	282
45	272	606	962	1128	1184	330
55	170	490	865	1078	1154	345
65	92	340	718	977	1061	325
75	29	207	524	810	891	264
85	0	112	320	568	683	180
90	0	55	223	429	548	
95	0	29	150	327	422	99
105	0	0	64	158	203	44
115	0	0	11	53	96	14
125	0	0	0	0	6	1
135	0	0	0	0	0	0
145	0	0	0	0	0	0
155	0	0	0	0	0	0
165	0	0	0	0	0	0
175	0	0	0	0	0	0
180	0	0	0	0	0	0

#### Coefficients of Utilization

Ceiling	80%			50%			30%			
Wall	70	50	30	50	30	10	50	30	10	
RCR	Zonal Cavity Method—Effective Floor Cavity Reflectance = 0.20									
Room Cavity Ratio	1	44	41	39	38	36	35	36	34	33
	2	39	36	32	32	30	28	31	29	27
	3	36	31	27	28	26	23	27	24	22
	4	33	27	23	25	22	20	24	21	19
	5	30	24	20	22	19	16	21	18	16
	6	27	21	17	20	16	14	19	16	14
	7	25	19	15	18	14	12	17	14	12
	8	23	17	13	16	13	10	15	12	10
	9	21	15	12	14	11	09	14	11	09
	10	20	14	10	13	10	08	12	10	08

#### Luminance Data in Candela/Sq. Meter

Average in Deg.	Average 90 Deg.	Average 45 Deg.	Beam Side
45	3409	7097	7427
55	2627	6682	7353
65	1929	6012	7086
75	993	4930	6457
85	0	3595	5586

#### Zonal Lumen Summary

Zone	Lumens	% Lamp	% Fixt
0-30	486	8.25	19.80
0-40	810	13.74	32.96
0-60	1522	25.81	61.94
0-90	2300	39.00	93.58
40-90	1490	25.26	60.62
60-90	777	13.18	31.64
90-180	157	2.67	6.42
0-180	2458	41.67	100.00



© 2013 Koninklijke Philips N.V. All rights reserved.  
Specifications are subject to change without notice.  
[www.philips.com/luminaires](http://www.philips.com/luminaires)

Philips Lighting Company  
200 Franklin Square Drive  
Somerset, NJ 08873  
Phone: 855-486-2216

Philips Lighting Company  
281 Hillmount Road  
Markham ON, Canada L6C 2S3  
Phone: 800-668-9008